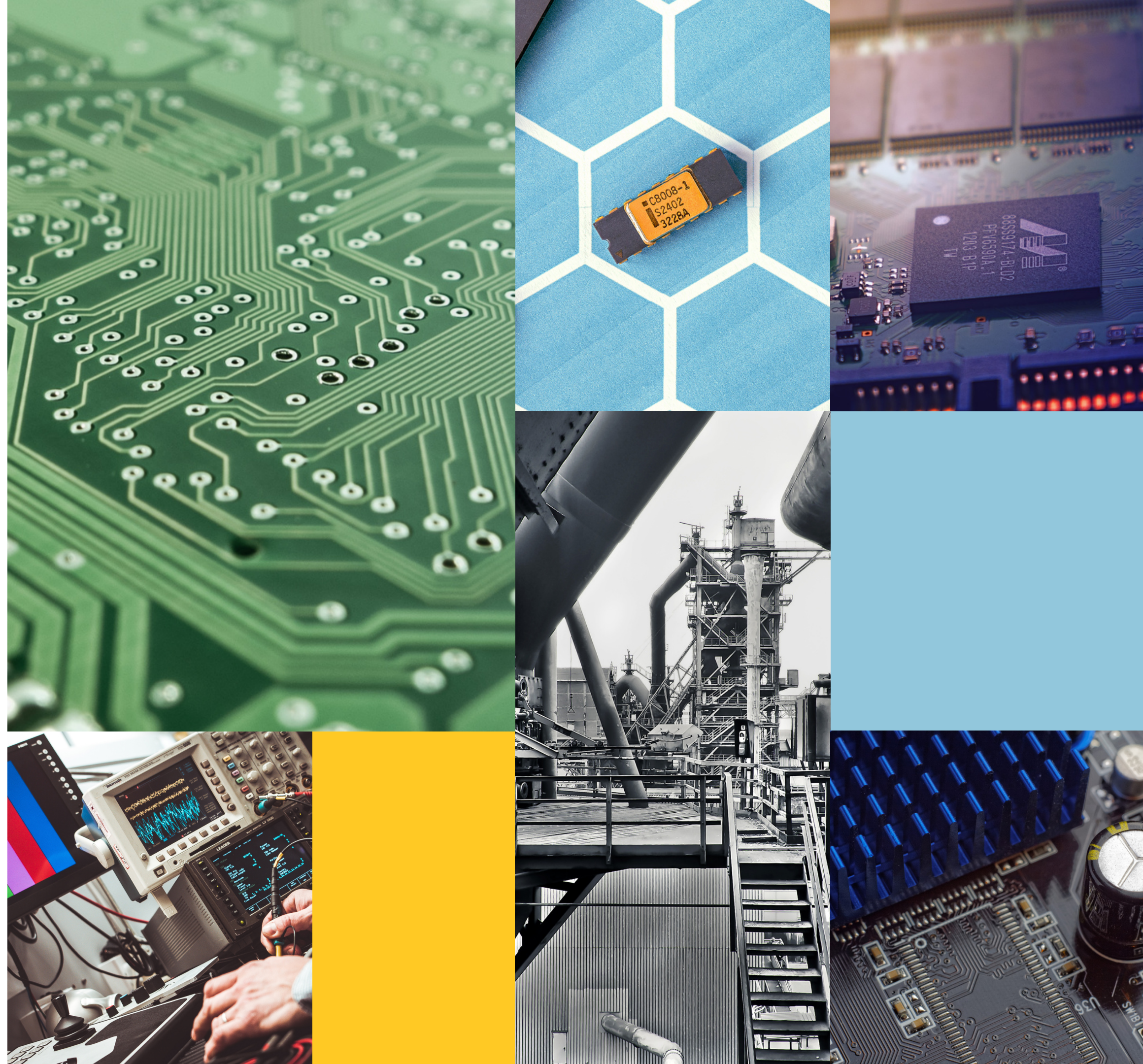


# ION

ELECTRONIC FIELDS

Eng. Samy Raheb

19 September 2020



# Company History

**Ion Electronic Fields was founded in 1973 with the first branch in Zamalek.**

**In 2007 we opened our second branch in Nasr City to be the company's head quarter specialized in the maintenance of Industrial electronics.**

**Lately in 2018 we moved our head quarters to a bigger office in Zamalek to be centralized enabling us to support all industrial zones efficiently and promptly.**



# Company Vision



**To be recognized as the most  
efficient maintenance service  
provider handling all electronic  
fields in Egypt**



# Our Edge

## Save Money

The service we offer saves millions paid in new parts and equipment.

## Full defect investigation

We must assure the robustness of our work.

## Save Time

We partner with our clients to ensure production continuity

## Our engineers work based on the latest scientific methods

Maintenance should always be up-to-date and coping with the newest technologies

## Avoid the hassle of training individuals on new machinery

This happens mainly in case of control unit replacement

## Global network of key spare part suppliers

Spare part supplier play a critical role in the speed of repair

## Increase factory spare parts inventory

By repairing the defected units instead of using the spare ones

## Reduce Factory electronic wastes

We help to reach greener operation

# Maintenance and Repair Services Provided for:

- PLC's
- Inverters.
- Touch Screens.
- Automation PC's.
- Flow Meters.
- Control Cords.
- Machine Power Supplies
- Control Power Supply Cards - ones built in the machine
- Servo Drives
- Firing systems
- Electrical Gates
- Monitors

# List of Clients

# FMCGs



# Automotives



Mercedes-Benz



# Heavy Industry



# Thank you

Looking forward to  
doing business  
together

**ION**  
ELECTRONIC FIELDS

**31 Ahmed Heshmat St, Zamalek**

**+202-273-518-56**

**+2010-086-080-76**

**[s.raheb@ionelectronicfields.com](mailto:s.raheb@ionelectronicfields.com)**